



PRODUCT DATA SHEET

COMPANY

Johns Manville is committed to creating more comfortable, healthier and energy-efficient indoor environments. At JM, we believe that in every detail, materials matter.

DESCRIPTION

JM MinWool Curtainwall Insulation is made of inorganic fibers derived from basalt, a volcanic rock. Advanced manufacturing technology ensures consistent product quality, with high-fiber density and low shot content for excellent performance. MinWool Curtainwall is available in plain or faced with a (FSP) Scrim Reinforced Foil Facing vapor retarder on one face. MinWool Curtainwall is inorganic, noncombustible, moisture resistant, non-deteriorating, and will not mildew or support corrosion.

USE

MinWool Curtainwall is designed to provide superior fire resistance and thermal properties in glass, metal, and masonry curtainwall spandrel systems. The board can be placed between or over framing members, and held in place with mechanical fasteners.

INSTALLATION

MinWool Curtainwall is easy to install. It is easily cut with a utility knife for convenient jobsite fabrication. A wide range of thicknesses facilitates optimum material usage.

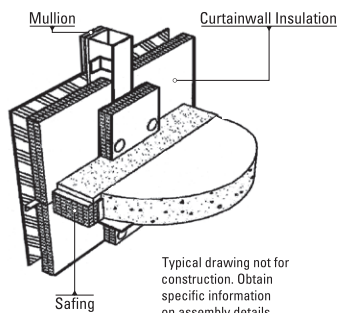
PACKAGING

MinWool Curtainwall is packaged in poly shrink wrap.

DESIGN CONSIDERATIONS

MinWool Curtainwall may also be used in fire-rated wall assemblies as required by the building code. A fire suppression system may also be needed in conjunction with good construction practices to provide adequate fire protection for the building. The need for and the placement of a vapor retarder in commercial construction depends on many factors. The architect or specifier should evaluate the requirements for each project. Two-hour and three-hour fire-rated assemblies are listed in the UL Fire Resistance Directory.

Typical Perimeter Fire Containment Joint



PERFORMANCE ADVANTAGES

Excellent Acoustical Performance:

Lightweight, flexible insulation batts are excellent sound absorbers, efficiently reducing sound transmission.

Fire Safety: MinWool Curtainwall has a melting point in excess of 2000°F (1093°C). See Applicable Standards for details.

Noncombustible: See Applicable Standards for details.

Durable & Inorganic: MinWool Curtainwall does not support growth of fungi, nor does it sustain vermin.

ENERGY AND ENVIRONMENT





LIMITATIONS OF USE

Check applicable building codes.

APPLICABLE STANDARDS & BUILDING APPLICATION*

MINWOOL CURTAINWALL
ASTM C423 Noise Reduction Coefficient (2"[51mm], Type "A" Mounting), 1.05
ASTM C612 Material Specification, Types 1-4
ASTM C665 Corrosivity to Steel, Passes
ASTM C1104 Water Vapor Sorption, <1% By Weight; <.02% by Volume at 120°F (49°C), 95% RH
ASTM C1338 Fungi Resistant, Passes
ASTM E84 Flame Spread/Smoke Developed, Unfaced 5/0 or less; Faced 25/5 or less
ASTM E96 FSP Facing Permeability, 0.02 Perms, Maximum
ASTM E136 Noncombustible, Passes
UL 723, CAN/ULC-S102-M, Unfaced 5/0 or less; Faced 25/5 or less
City of New York, MEA-346-90
ICC (International Building Code), All Building Classification Types

*DISCLAIMER: JM products are designed, manufactured and tested to strict quality standards in our own facilities. This, along with third-party auditing, is your assurance that this product delivers consistent high quality.

STANDARD SIZES

PRODUCT	DENSITY ASTM C612						THICKNESS*	
	NOMINAL	ACTUAL	R-VALUE/inch	RSI-VALUE/25mm	WIDTH	LENGTH	UNFACED	FACED
	pcf (kg/m³)	pcf (kg/m³)	(hr·ft²·°F/Btu)	(°K·m²/W)	in (mm)	in (mm)	in (mm)	in (mm)
CW4	4.0 (64)	3.0 (48)	4.0	0.70	24 (610)	48 (1219)	1-6 (25-152)	>3 (>76)
CW6	6.0 (96)	4.5 (72)	4.1	0.72	24 (610)	48 (1219)	1.5-6 (38-152)	2-6 (51-152)
CW8	8.0 (128)	6.0 (96)	4.2	0.74	24 (610)	48 (1219)	1-4.5 (25-114)	1.5-4.5 (38-114)

*Thickness range available in 1/2" (13mm) increments. Custom lengths, widths and thicknesses are also available. R-value is determined in accordance with C518.



Visit our website at www.JM.com or call 800-654-3103 | 717 17th Street Denver, CO 80202

Technical specifications as shown in this literature are intended to be used as general guidelines only. The physical and chemical properties of mineral wool insulation listed herein represent typical, average values obtained in accordance with accepted test methods and are subject to normal manufacturing variations. They are supplied as a technical service and are subject to change without notice. Any references to numerical flame spread or smoke developed ratings are not intended to reflect hazards presented by these or any other materials under actual fire conditions. Check with the sales office nearest you for current information. All Johns Manville products are sold subject to Johns Manville's Limited Warranty and Limitation of Remedy. For a copy of the Johns Manville Limited Warranty and Limitation of Remedy or for information on other Johns Manville thermal and acoustical insulation and systems, visit the website or call the 800 number above.

BID-0165 7/14

© 2014 Johns Manville. All Rights Reserved.