

# FLASH-TITE

## BT

### ROOF DRAINS

## DESCRIPTION & USE

Premium balcony and terrace drains. Compatible with single ply, built-up or modified bitumen roofing membranes. Available in a 'new construction' design or a 'retrofit' insert design for reroofing applications. Available in copper and aluminum.

## FEATURES & BENEFITS

**A Flatter Flange** - Fits more "wrinkle-free" into the hopper.

**Heavy-Duty Construction** - Matt finish, stainless steel plates, laser-cut cover plate and strainers provide exceptional resistance to vandalism. Secured with stainless steel 6.35 mm (3/8") hex nuts, the strainer design resists loss or theft. Copper hoppers are welded (versus soldered) to resist failure from high temperature roofing torches.

**Mechanical Membrane Securement** - Mechanically fastened for the securement of the roofing membrane to the drain.

**Full Insulating Value** - Flat, funnel-less design permits rapid drainage without compromising the full thickness of the substructure.

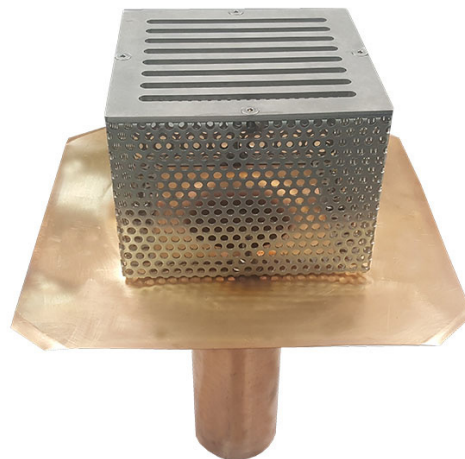
**Separate Cover Plate & Strainer** - Can be removed for cleaning without affecting the clamping membrane seal.

**Choice of Design** - Bodies are available in a choice of heavy gauge 2.1 mm (0.081") seamless spun aluminum hopper or 1.5 lbs (24 oz) 0.81 mm (0.032") welded copper.

## TECHNICAL DATA

Physical Dimensions	
Strainer Height:	Variable
Downpout Length:	300 mm (12")
Flange Diameter:	400 mm (17")

Drain Sizes	
New Constructions Drain Pipes Sizes	Retrofit Drain Pipe Sizes
51 mm (2")	44 mm (1.75") to fit a 51 mm (2") drain pipe
76 mm (3")	70 mm (2.75") to fit a 76 mm (3") drain pipe
102 mm (4")	95 mm (3.75") to fit a 102 mm (4") drain pipe
152 mm (6")	146 mm (5.75") to fit a 152 mm (6") drain pipe



### Options:

Refer to the appropriate data sheet for more information:

- Drain Seal (Maxxflo is recommended)
- Under Deck Clamp
- Flow Control Insert
- Prefabricated Target Patch
- LEXHEAT Self-regulating Heat Plate

## INSTALLATION

Install the roof membrane, cutting an appropriate sized hole through the membrane over the drain pipe. If using a pipe seal, connect it to the drain downspout. Insert the drain downspout into the drainage pipe, ensuring a proper drain-to-pipe seal.

Adhere the drain hopper flange to the top of the underlying roof membrane using a membrane compatible adhesive. If desired, the drain may also be mechanically fastened to the structural deck with concrete screws. Fasten 4 screws 25 mm (1") is from the edge of the flange. Alternatively, use the FLASH-TITE Under Deck Clamp.

Adhere appropriate membrane flashing otop of the drain flange, bringing it up to the edge of the downspout. Apply a membrane compatible sealant along the edge of the membrane flashing. Install any drain accessories as required. Install strainer by fastening down 4 to 8 nuts (do not over tight). Tighten the strainer cover down to the strainer with the strainer retaining bolts. Complete membrane flashing detail.

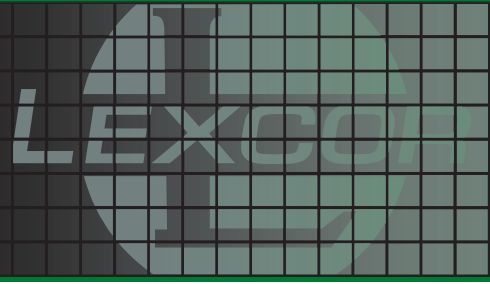


## COMMERCIAL BUILDING PRODUCTS

Ontario & Western Canada 1.800.268.2889 / Quebec & Atlantic 1.800.363.2307

Distr. By/Par Lexsuco 2010 Corporation, 3275 Orlando Drive, Mississauga, ON, L4V 1C5

# FLASH-TITE BT ROOF DRAINS

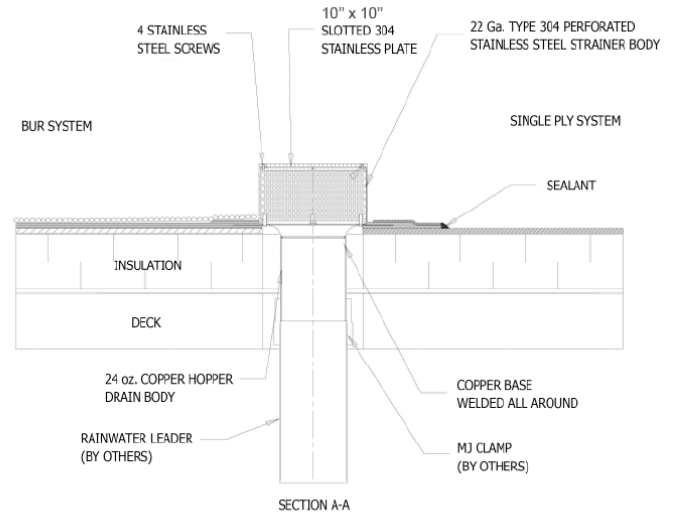


## SPECIFICATION

### FLASH-TITE BT ROOF DRAINS

**Spec Note:** Choose desired choice from alternative options in square brackets.

1. Description: [New Construction; Retrofit] Drain hopper shall consist a [1.5 lbs (24 oz) - 0.81 mm (0.032") thick spun copper hopper welded to a DWV copper downspout; 2.1 mm (0.081") seamless spun aluminum].
2. Flange shall be fixed with (4) 6.35 mm (3/8") threaded clamping studs to receive a strainer. Strainers shall be fabricated from mat finish, heavy-duty perforated stainless steel. Strainers shall be a 152 mm (6") in height, secured to the drain body with (4) 6.35 mm (3/8") hex nuts single stainless steel bolts.
3. Drains shall be supplied with [Flow Control Insert].
4. Drains shall be inserted into the drain pipes as shown on the shop drawings and secured to the deck with the [Under Deck Clamp (UDC)] secured tightly to the underside of the deck. Seal the drain to the drainpipe with the appropriate size [Maxxflo Retrofit Roof Drain Seal; FLASH-TITE Drain Seals; mechanical joint connectors].
5. Flash the drains into the roofing system in accordance with [NRCA guidelines; CRCA guidelines; the requirements of the roof membrane manufacturer]. Install strainer over membrane and secure tightly to the flange with stainless steel nuts and washers.
6. Specified Product: LEXCOR FLASH-TITE BT ROOF DRAIN by LEXCOR ([www.lexcor.net](http://www.lexcor.net), Tel: 800.268.2889, E-Mail: [info@lexcor.net](mailto:info@lexcor.net)).



## WARRANTY

This product is warranted against manufacturing defects for a period of 20 years.



### COMMERCIAL BUILDING PRODUCTS

Ontario & Western Canada 1.800.268.2889 / Quebec & Atlantic 1.800.363.2307

Distr. By/Par Lexsuco 2010 Corporation, 3275 Orlando Drive, Mississauga, ON, L4V 1C5