

**TECHNICAL DATA SHEET**

**DELTA®-NaturaDrain**

**For Heavy Duty Vertical Drainage Applications with Waterproofing.**

**MATERIAL**

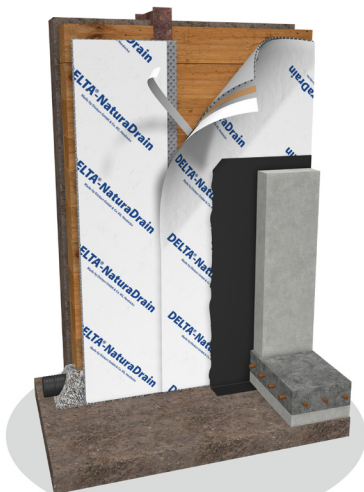
DELTA®-NaturaDrain is a high performance, 3-dimensional drainage composite with three layers. It consists of a dimpled drainage core and two layers of high strength polypropylene (PP) geotextile. One geotextile (gray) is heat-bonded to dimples, the other geotextile (white) is fully adhered to the backside of the drainage core. Provides a smooth surface for the application of liquid applied waterproofing membrane. The drainage core is made from a special high-density polyethylene (HDPE) that provides high impact-and tear-resistance and is unaffected by environmental stress-cracking. The non-clogging geotextile is fully bonded to the dimpled drainage core, which prevents it from being pushed into the flow channels.

**PROPERTIES**

DELTA®-NaturaDrain has been specifically designed for use in blind side applications with liquid applied waterproofing. The white geotextile on the back on the drainage core is fully adhered to the back side to provide for easy application of the liquid waterproofing membrane. With its exclusive self-adhering edge, DELTA®-NaturaDrain provides a continuous path for water discharge and relieves hydrostatic pressure buildup. The non-woven gray geotextile allows water to pass freely into the drainage core. At the same time, it prevents the passage of soil particles to ensure that the drainage core doesn't get clogged. DELTA®-NaturaDrain is the ideal solution for applications where high drainage capacity is required. Subsurface water can pass easily into the drainage core where gravity feeds it into the drainage system at the bottom of the foundation. The product is rot-proof.

**APPLICATION**

It is suitable for blind side wall construction. It is ideal for the application of liquid-applied waterproofing and is specifically designed to function as a carrier for liquid waterproofing system. The liquid waterproofing is easily applied to the white geotextile that provides excellent visual aid for the waterproofing installer to ensure proper continuity and membrane thickness.



**Technical Data**

Product name	DELTA®-NaturaDrain	
Color	Silver	
Material	Drainage core: high-density polyethylene (HDPE)	
	Geotextile: Polypropylene (gray)	
	Geotextile: backsheet: Polypropylene (white)	
Dimple height	approx. 2/5" (9 mm)	ASTM D5199
Compressive strength	7,300 psf (350 kN/m <sup>2</sup> )	ASTM D6364-06
Drainage core maximum tearing strength	MD180 N CD100 N	ASTM D5884-04a
Geotextile (gray) grab tensile strength	120 lbs (534 N)	ASTM D4632
Geotextile (gray) elongation	60%	ASTM D4632
Geotextile (gray) trapezoidal tear	25 lbs (110 N)	ASTM D4533
Geotextile (gray) puncture strength	50 lbs (223 N)	ASTM 6833
Geotextile (gray) apparent opening size (AOS)	50 sieve size (0.30 mm)	ASTM D4751-99
Geotextile (gray) water flow rate	95 gal/min/ft <sup>2</sup> (3895 l/min/m <sup>2</sup> )	ASTM D4491
Permittivity	1.70 sec <sup>-1</sup>	ASTM D4491
Geotextile (gray) weight (typical)	3.0 oz/yd <sup>2</sup> (104 g/m <sup>2</sup> )	ASTM D5261-92
Geocomposite water flow rate @ hydr. grad. 1.0	21 gal/min/ft (260 l/min/m)	ASTM D4716-99
Geocomposite water flow rate @ hydr. grad. 0.1	6 gal/min/ft (75 l/min/m)	ASTM D4716-99
Toxicity	non-toxic, non-polluting	
Roll size / weight	6'-7" x 41' (2 m x 12.5 m) 51 lbs (23 kg)	
Service life expectancy	> 25 years (at pH between 4 and 9 and temperature below 77°F / 25°C). Do not expose to UV light for more than 30 days.	

DELTA® products support sustainable and energy-efficient building practices, including efforts toward achieving LEED® certification (LEED® for New Construction).

For technical support, call our technical support team at 1-888-4DELTA4 (1-888-433-5824) extension 326, or visit [www.dorken.com](http://www.dorken.com).



Dörken Systems Inc. 4655 Delta Way Beamsville, Ontario L0R 1B4

1-888-4 DELTA 4, (905) 563-3255 Fax: (905) 563-5582

info@dorken.com, www.dorken.com

A company of the **DÖRKEN**GROUP