

DESCRIPTION AND USE

LEXCAN HI-FLEX EPDM STANDARD MEMBRANE WITH PRE-APPLIED SEAM TAPE is a non-reinforced, cured ethylene propylene diene monomer (EPDM), delivering one of longest roofing membrane service lives available. Membrane sheets are manufactured with 102 mm (4") or 152 mm (6") pre-applied seam tape to ensure consistent and quality seams.

HI-FLEX EPDM meets or exceeds the requirements of ASTM D 4637, Type I.

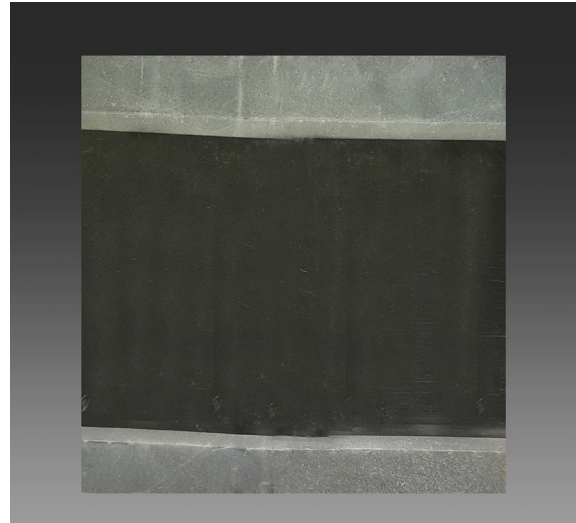
FEATURES AND BENEFITS

Pre-Applied Seam Tape - Compared to field-fabricated seams, the enhanced seaming improves reliability and consistency, as well as productivity.

Superior Weatherability - Highly resistant to ozone or ultra-violet deterioration.

Flexibility - HI-FLEX EPDM remains flexible even in extreme temperature climates. Structural expansion or contraction that would crack or tear other roofing materials does not affect EPDM.

Proven Durability - HI-FLEX EPDM Roofs have been successfully installed on and protecting buildings across Canada, since 1968.



TECHNICAL DATA

Physical Properties	ASTM Test Method	Standard for ATSM D 4637, Type I	1.14 mm (45-mil)	1.52 mm (60-mil)	2.29 mm (90-mil)
Tensile Strength:	D 412	> = 1305	1686	1456	1604
Elongation, Ultimate (%):	D 412	> = 300	451	411	426
Tensile Set (%):	D 412	< = 10	0.4	0.5	0.4
Tear Resistance (lbf/in.):	D 624	> = 150	185	181	171
Dynamic Puncture Resistance, 5J, Type I:	D 5635	Pass	Pass	Pass	Pass
Static Puncture Resistance, 44.1 lbf, Type I:	D 5602	Pass	Pass	Pass	Pass
Overall Sheet Thickness (in.):	D 751	+/- 10%	Pass	Pass	Pass
Brittleness Point °C (°F):	D 2137	< = - 45 °C (- 49 °F)	Pass	Pass	Pass
Ozone Resistance:	D 1149	Pass	Pass	Pass	Pass
Water Absorption (mass %):	D 471	< = 8	0.55	0.3	0.4
Heat Aged 670 hrs @ 116 °C (240 °F):	D 573				
Tensile Strength (psi):	D 412	> = 1205	1693	1450	1461
Elongation, Ultimate (%):	D 412	> = 200	287	403	284
Tear Resistance (lbf/in.):	D 624	> = 125	149	170	145
Linear Dimensional Change (%):	D1204	+/-1	0.4	0.4	0.4
Weathering Resistance, 540 KJ (m ² -nm) @ 340 nm:	D 4637 / G 151 / G 155				
Visual Inspection:	-	Pass	Pass	Pass	Pass
Elongation, Ultimate (%):	D 412	> = 200	449	351	394

HI-FLEX EPDM

STANDARD MEMBRANE WITH PRE-APPLIED SEAM TAPE

LEXCAN

Physical Properties - Pre-Applied Seam Tape	
Base:	Rubber/Butyl polymer
Colour:	Black
Solvents:	None
Percent Solids:	100%
Cure State:	Partially Cured
Thickness:	0.63 mm ± 0.13 mm (25 mils ± 5 mils)
Width:	102 mm (4") & 152 mm (6")
Release Liner:	Polyester

ENERGY & THE ENVIRONNEMENT

Properties	Values
Reflectivity * (ASTM C 1549):	0.06
Emissivity * (ASTM C 1371):	0.88
Post-Consumer Recycled Content:	0%
Pre-Consumer Recycled Content:	0%

*Test methods for reflectivity and emissivity are LEED® - CRRC® - approved.

APPROVALS & COMPLIANCES

- FM
- UL



PACKAGING & COVERAGE

1.14 mm (45-mil), 1.52 mm (60-mil) and 2.29 mm (90-mil)

Roll Sizes	Roll Coverage	45-mil*	60-mil	90-mil
3.05 m x 30.48 m (10'x 100')	92.9 m ² (1000 ft ²)	✓	✓	✓
5.08 m x 30.48 m (16' 8"x 100')	154.8 m ² (1667 ft ²)	-	✓	✓
6.1 m x 30.48 m (20'x 100')	185.8 m ² (2000 ft ²)	✓	✓	✓
9.14 m x 30.48 m (30'x 100')	278.7 m ² (3000 ft ²)	✓	✓	✓

*1.14 mm (45-mil) only available with 102 mm (4") pre-applied seam tape

SHELF LIFE

12 months from manufacture date.

PRODUCT COMPATIBILITY

HI-FLEX EPDM is compatible with the following Application Methods:

- Fully Adhered
- Loose Laid and Ballasted
- Inverted Roof Membrane Assembly

INSTALLATION

HI-FLEX EPDM Membranes are installed by professional roofing contractors trained and approved by LEXCAN. Refresher seminars are regularly held to update contractors on the latest techniques and developments. Refer to HI-FLEX EPDM application guides and detail drawings for instructions.

WARRANTY

Superior installation quality and long-term performance is guaranteed with comprehensive LEXGUARD warranty packages. To provide the best assurance of a quality installation, projects are normally inspected both during installation and after completion by a LEXCAN technical representative.

LEXCAN

SINGLE PLY ROOFING SYSTEMS

Ontario & Western Canada 1.800.268.2889

Quebec & Atlantic Canada 1.800.363.2307

Distr. By/Par Lexsuco 2010 Corporation, 3275 Orlando Drive, Mississauga, ON, L4V 1C5