

DESCRIPTION AND USE

LEXCAN HI-FLEX EPDM STRIPBOND II consists of a reinforced EPDM membrane strip with EPDM based pressure sensitive tape. The pressure sensitive tape is pre-applied along one edge, and can be installed horizontally or vertically, in conjunction with Seam Fastening Plates below the EPDM membrane for additional membrane securement.

HI-FLEX EPDM STRIPBOND II is designed for perimeter securement and can be used on HI-FLEX EPDM Loose Laid and Ballasted, Fully Adhered or Mechanically Fastened Roofing Systems.

FEATURES AND BENEFITS

Eliminates Fastening through Membrane - Reduces the potential for leaks.

Eliminates Membrane Bridging - Extends the service life of the EPDM membrane.

Quick and Easy to Install - Saves time and labour.

TECHNICAL DATA

Typical Properties and Characteristics	Test Method	Typical Values
Colour (Cover & Tape):	Visual	Black
Base Polymer (Cover & Tape):	FTIR	EPDM
Peel Strength:	ASTM D 413	10 pli @ 21°C (70°F)
Shear Strength:	ASTM D 816	20 psi @ 21°C (70°F)
Brittleness Temperature:	ASTM D 746	-46°C (-50°F)

Note: The reported values are based on samples tested of this product. The reported values represent typical, average values obtained in accordance with accepted test methods and are subject to normal manufacturing variations.

PACKAGING

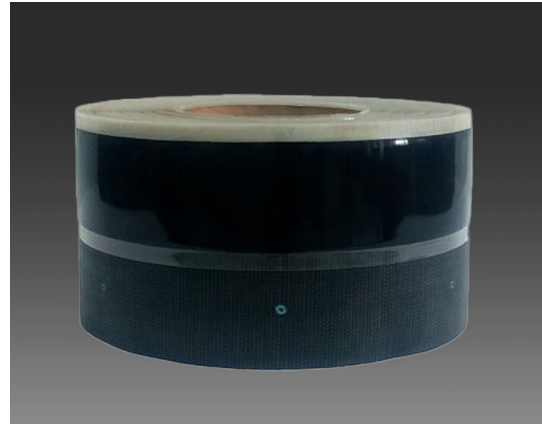
Sizes	Roll per Box
152 mm x 30.48 m (6' x 100')	2

STORAGE

Store material in original unopened packaging at temperatures between 4°C - 43°C (40°F-110°F).

SHELF LIFE

24 months when stored as recommended.



INSTALLATION

Ensure that the substrate is suitable for application of HI-FLEX EPDM STRIPBOND II. Ensure the area to receive this product is clean, dry, and free of dirt, dust, debris, oils, un-adhered coatings, deteriorated membrane or other contaminants that may affect the performance of HI-FLEX EPDM STRIPBOND II.

Parapet Wall:

1. Place STRIPBOND II horizontally at the angle change with the tape facing up and toward the field of the roof.
2. Put Seam Fastening Plates 3 to 19 mm (1/8" to 3/4") away from the angle change, no more than 300 mm (12") apart and attach them with a LEXGRIP fastener. Avoid putting plates over the release liner, as this will make the liner rip when removed.
3. Clean and prime the whole area where the Reinforced Strip will go. The STRIPBOND II adhesive will not stick to dusty/dirty surfaces. Use a clean cloth to wipe off any dirt or dust from the plate installation. If there is a lot of dirt, use LEXCAN SINGLE PLY MEMBRANE CLEANER to clean the splice area well. Any remaining dust/dirt will weaken the tape adhesive's bond.
4. Application of LEXCAN PA-100 EPDM AND TPO MEMBRANE PRIMER: Apply the primer using a clean LEXCAN scrub pad or brush. Scrub the area of the membrane where the Reinforced EPDM Strip will be applied in a circular motion to achieve a thin, even coating on the membrane. The primed area should have a consistent colour without streaks or blobs.
5. Allow the primer to dry until it does not transfer to a dry finger touch.
6. Take off the release liner from the tape adhesive on the STRIPBOND II, pulling it along the roof deck.

STRIPBOND II

7. Roll the membrane on to the exposed adhesive and apply pressure by hand to the splice area. Roll with 50 mm (2") silicone roller.
8. Pull the membrane back to expose the unadhered portion of the STRIPBOND II. Apply LEXCAN BA-90 to the deck membrane, exposed STRIPBOND II and Parapet Wall.
9. When the adhesive is dry, roll the membrane to the angle change and fold it. Roll the membrane up the wall and sweep it for complete adhesion.
10. Use a 50 mm (2") wide silicone roller to roll the whole 150 mm (6") width of the STRIPBOND II splice area.

Note: REVIEW CURRENT LEXCAN SPECIFICATIONS AND DETAILS FOR SPECIFIC APPLICATION REQUIREMENTS.

CAUTIONS AND LIMITATIONS

- Not to be used without mechanical fasteners.
- Not for use with PVC membrane.
- Not for use with TPO membrane.