

### DESCRIPTION & USE

LEXCAN HI-TUFF TPO STRIPBOND II consists of a reinforced TPO membrane strip with factory-applied pressure sensitive tape. The pressure sensitive tape is pre-applied along one edge, and can be installed horizontally or vertically, in conjunction with Seam Fastening Plates below the TPO membrane for additional membrane securement.

HI-TUFF TPO STRIPBOND II is designed for perimeter securement and can be used on HI-TUFF TPO Fully Adhered or Mechanically Fastened Roofing Systems.

### FEATURES & BENEFITS

**Eliminates fastening through membrane** - reduces the potential for leaks.

**Quick and Easy to Install** - saves time and labour.

### TECHNICAL DATA

Typical Properties & Characteristics	
Colour:	White
Total Thickness:	1.90 mm (75-mil)
Membrane Thickness:	1.14 mm (45-mil)
Tape Thickness:	0.76 mm (30-mil)

### PACKAGING & COVERAGE

Size	Roll per Box
152 mm x 30.48 m (6" x 100')	2

### STORAGE

Store material in original unopened packaging out of direct sunlight, and indoors at temperatures between 16°C - 27°C (60°F - 80°F)

### SHELF LIFE

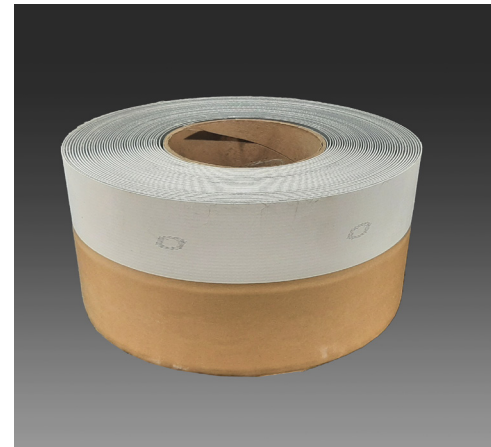
18 months from the manufacture date.

### INSTALLATION

Ensure that the substrate is suitable for the application of HI-TUFF TPO STRIPBOND II. Ensure the area to receive this product is clean, dry, and free of dirt, dust, debris, oils, un-adhered coatings, deteriorated membrane, or other contaminants that may affect the performance of HI-TUFF TPO STRIPBOND II.

#### Parapet Wall:

1. Place STRIPBOND II horizontally at the angle change with the tape facing up and toward the field of the roof.



2. Put Seam Fastening Plates 3 to 19 mm (1/8" to 3/4") away from the angle change, no more than 300 mm (12") apart and attach them with a LEXGRIP fastener and barbed plates (follow the markings on the STRIPBOND II). Avoid putting plates over the release liner, as this will make the liner rip when removed.
3. Clean and prime the whole area where the Reinforced TPO Strip will go. The STRIPBOND II adhesive tape will not stick to dusty/dirty surfaces. Use a clean cloth to wipe off any dirt or dust from the plate installation. If there is a lot of dirt, use LEXCAN SINGLE PLY MEMBRANE CLEANER to clean the splice area well. Any remaining dust/dirt will weaken the tape adhesive's bond.
4. Application of LEXCAN PA-100 EPDM AND TPO MEMBRANE PRIMER : Use a scrub pad and handle to apply Primer to the bottom of the field sheet membrane where it will touch the 76.2 mm (3") wide tape. The primed area should have a consistent colour without streaks or blobs.
5. Allow the primer to flash off until it does not transfer to a dry finger touch.
6. Take off the release liner from the tape adhesive on the STRIPBOND II, pulling it along the roof deck.
7. Roll the membrane onto the exposed adhesive and apply pressure by hand to the splice area. Roll with 50.8 mm (2") silicone roller.
8. Pull the membrane back to expose the unadhered portion of the STRIPBOND II. Apply LEXCAN BA-90 to the back of the membrane, exposed STRIPBOND II and parapet wall.
9. When the adhesive is dry, roll the membrane to the angle change and fold it. Roll the membrane up the wall and sweep it for complete adhesion.

# HI-TUFF TPO

## STRIPBOND II

# LEXCAN

10. Use a 50.8 mm (2") wide silicone roller to roll the whole 150 mm (6") width of the STRIPBOND II splice area.

NOTE: REVIEW CURRENT LEXCAN SPECIFICATIONS AND DETAILS FOR SPECIFIC APPLICATION REQUIREMENTS.

### CAUTIONS & LIMITATIONS

- Do not install in direct contact with asphalt or coal tar pitch.

# LEXCAN

### SINGLE PLY ROOFING SYSTEMS

Ontario & Western Canada 1.800.268.2889

Quebec & Atlantic Canada 1.800.363.2307

Distr. By/Par Lexsuco 2010 Corporation, 3275 Orlando Drive, Mississauga, ON, L4V 1C5