

WallShield IT® Integrated Tape

a mechanically attached, water resistive vapor permeable membrane with integrated tape at the horizontal seams; Product No: 10208905

WrapFlashing

Product No.: 40105500 / 40108000

Product Description

WallShield IT Integrated Tape water resistive barrier (WRB) membrane protects the building envelope by allowing vapor and air to pass through but not liquid water mitigating costly moisture damage.

BASIC USE

WallShield IT Integrated Tape is installed above grade behind rain screen wall cladding assemblies.

MATERIALS

WallShield IT Integrated Tape consists of multiple layers of spun-bonded polypropylene fabric with clear integrated horizontal tape and a pre-marked lap template, ensuring accurate horizontal seam installation.

BENEFITS

Exceptional building envelope protecting – cutting-edge drying capacity (123 perms) allows building materials to dry-out, reducing the risk of damage from moisture infiltration, mold, mildew and rot for the life of the building.

Factory installed clear integrated tape – seals horizontal seams ensuring the upper layer shingles over the lower layer creating the 6" shingled effect.

Pre-marked shingle template – increases installation accuracy.

Consistent millage thickness – factory made rolled good ensures consistent properties and performance.

Fully tested building envelope system – rough opening flashing accessories eliminate the need for untested outside components.

Mechanically attaches – to multiple substrates using VaproCaps™.

Compatible Substrates

- OSB
- Exterior Gypsum Sheathing
- Rigid Insulation
- Precast Concrete
- Concrete Block
- Cast-in-place Concrete
- Plywood
- Pre-painted Steel
- Galvanized Metal
- Aluminum (Painted/Mill Finish)
- Anodized Aluminum
- Vinyl Window and Door Frames
- Fiberglass Window and Door Frames

Contact VaproShield Technical – if you have additional substrate questions.

Simple installation – requires only basic tools, no specialized mobilizations or protection gear are required.

Install on dry and/or saturated substrates – eliminates additional water accumulation by locking out liquid water, allowing vapor diffusive drying and helping to “dry-in” the build.

Spans substrate joint gaps up to 7/8” (22.2mm), eliminates need for tapes and fillers.

Phase construction ready, install in all temperatures sustains up to 180 days UV and climate exposure prior to cladding installation.

Emits zero VOCs, no primer required, ensuring crew safety and a healthy building.

Technical Data & Environmental

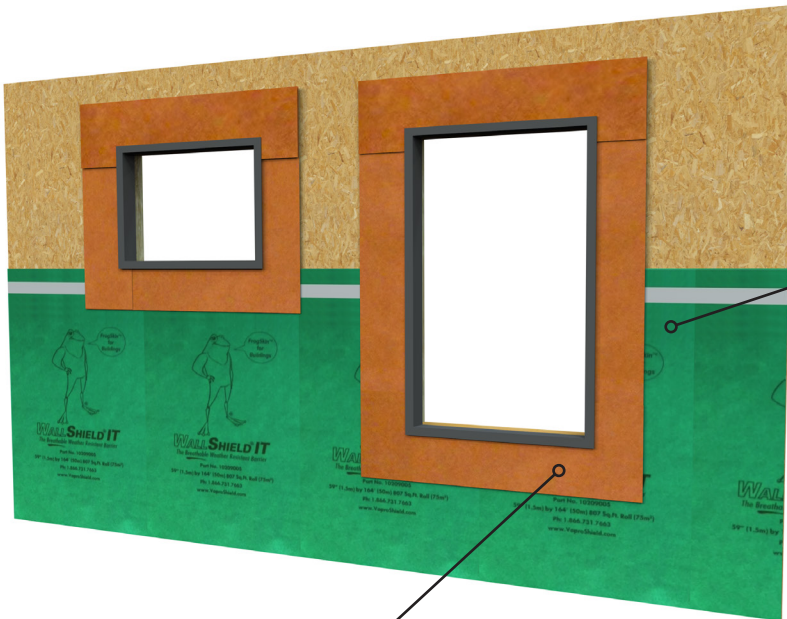
Passed and tested to industry standards for Weather Resistive Barriers.

WallShield IT Integrated tape emits zero VOCs, making the membrane safe for work crews and occupants for the life of the building.

PHYSICAL PROPERTIES	
PROPERTY	RESULT
Color	Green (top), White (back)
Thickness	0.56 mm (22 mil)
Membrane Weight	191.4 g/m ² (0.627 oz/ft ²)
Roll Weight	34 lbs (15 kg)
Roll Dimensions	59" x 164' (1.5m x 50m)
Roll Coverage	807 sq. ft. (75 sq. m.)
Skid	20 Rolls
VOCs	None
Ultra Violet Light Exposure	180 days maximum
Minimum Application Temperature	Unlimited
Warranty	20 year material warranty
Service Temperature	minus 40°F (-40°C) - 183°F (84°C)

PRODUCT DATA SHEET

WallShield IT Product No.: 10208905 / WrapFlashing Product No.: 40105500 / 40108000



Complete Building Envelope System

WRB WallShield IT Integrated Tape

ROUGH OPENING FLASHING OPTIONS

The following rough opening flashing components can be used:

- VaproLiqui-Flash™
- BlockFlashing™
- VaproBond™

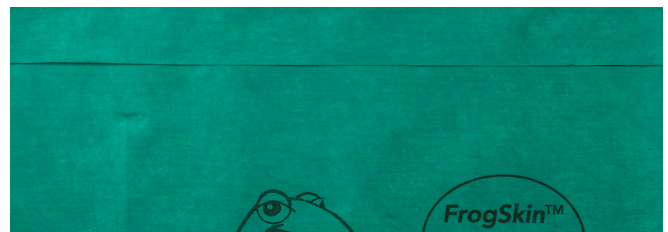
Reference individual data sheets for comprehensive information.

Rough Opening Flashing Membranes			
Product	Part No.	Roll Sizes	
WrapFlashing SA Self-Adhered Roll	46105590	Roll Size: 11 3/4" x 164" (298mm x 50m) 161 S/F (15 S/M)	
	46108090	Roll Size: 19 2/3" x 164" (500mm x 50m) 269 S/F (25 S/M)	
WrapFlashing Roll (Mechanically Attached)	40105500	Roll Size: 11 3/4" x 164" (298mm x 50m) 161 S/F (15 S/M)	
	40108000	Roll Size: 19 2/3" x 164" (500mm x 50m) (25 S/M) Weight: 9.5lbs (4.3kg)	

BEST PRACTICE INSTALLATION



Secure membrane with stainless steel staples above integrated tape. Align the bottom of the upper course with the dotted line for proper 6" (15 cm) overlap.



Tape seals horizontal seams. The upper course is properly shingled over the lower course, eliminating water concerns at the horizontal joints.

In conjunction with:

Window and Rough Openings Flashing	VaproLiqui-Flash	BlockFlashing	VaproBond
Application Temperature	35°F to 110°F (1.7°C to 43°C)	0°F to 180°F (-18°C to 82°C)	20°F to 120°F (-6.7°C to 49°C)
Drying Capacity	High	None	Low
Breathable Permeability			
Application Method	Sausage Gun / Putty Knife or Brush	Utility Knife / J-Roller	Sausage Gun / Putty Knife

Visit VaproShield.com to review additional flashing options.

BEST PRACTICE VERTICAL SEAMS

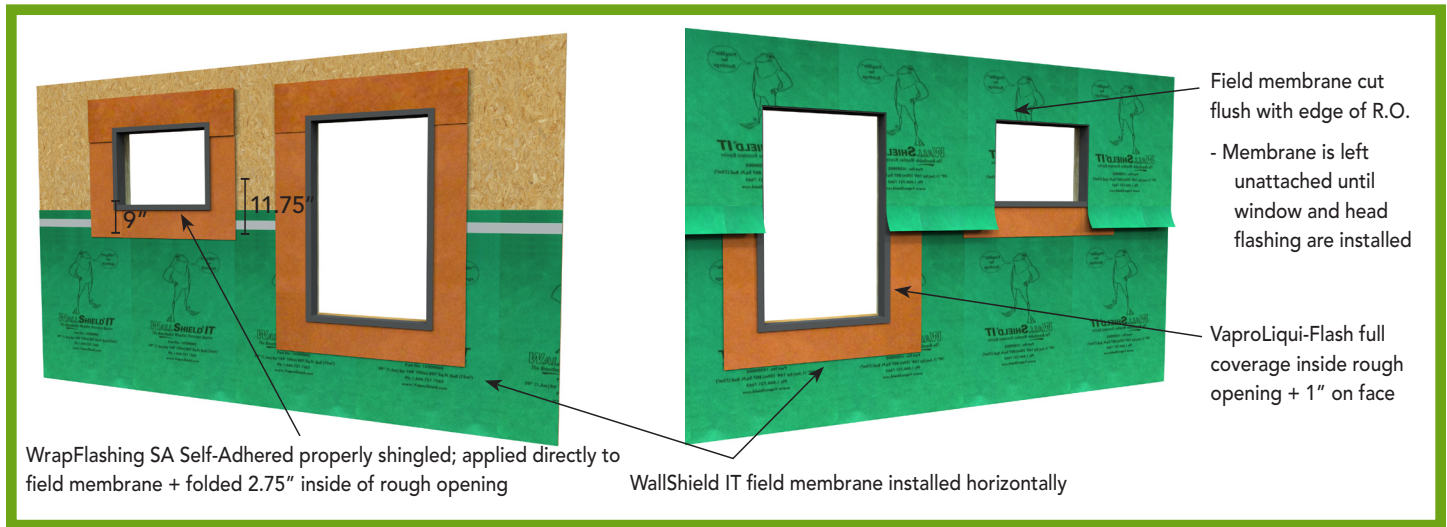


Overlap vertical seams by a min. 12". Apply 1/4" (6.4mm) bead of VaproBond adhesive to ensure water and air barrier seal. For complete installation instructions, visit VaproShield.com

PRODUCT DATA SHEET

WallShield IT Product No.: 10208905 / WrapFlashing Product No.: 40105500 / 40108000

Commercial Window Rough Opening Flashing System with WrapFlashing SA



Visit VaproShield.com to view full installation sequence

RELATED LEED CREDITS

VaproShield membranes qualify for LEED credits. Visit VaproShield.com for the latest sustainability and LEED information.

Installation

STORAGE AND HANDLING

Store material rolls on end in original packaging. Protect rolls from direct sunlight and inclement weather until ready for use.

SAFETY

Work crews are safe around VaproShield membranes. WallShield IT Integrated Tape contains zero VOCs or toxins.

PREPARATION

All surfaces must be dry, sound, clean, "as new" condition, and free of oil, grease, dirt, excess mortar or other contaminants detrimental to the adhesion of the water resistive air barrier membrane and flashings. Fill voids and gaps in substrate greater than 7/8 inch (22.2 mm) in width to provide an even surface. Strike masonry joints full-flush.

BEST PRACTICE INSTALLATION

Install WallShield IT with approved fasteners in a horizontal, shingle fashion.

Horizontal overlaps must be 6" (15 cm) to properly seal the integrated tape joint.

Vertical overlaps must be minimum 12" (30 cm) and require VaproBond adhesive sealant.

Vertical overlaps are to be staggered a minimum of 24" (61

cm) and should not occur directly above or below windows or doors.

Inside and outside corners can be continuous, or if a vertical joint occurs within 24" horizontally, an overlap of 12" minimum in both directions is required, providing a double layer at the corner."

Visit www.VaproShield.com for complete installation instructions and instructional videos.

LIMITATIONS

WallShield IT Integrated Tape should be covered within 180 days of installation.

Do not contaminate WallShield IT Integrated Tape WRB with building site chemicals which make it more wettable (e.g., surfactants), This will adversely affect its water resistance and therefore its contribution to the water resistance of the overall wall system.

WallShield IT Integrated Tape WRB should not be subjected to asphaltic materials, chemicals, surfactants, or cleaning compounds that could affect the water resistance of the membrane surface; if exposed, replace effected membrane.

Availability

VaproShield products are available throughout North America, Central and South America, and New Zealand.

Warranty

A 20-year material warranty is available.

PRODUCT DATA SHEET

WallShield IT Product No.: 10208905 / WrapFlashing Product No.: 40105500 / 40108000

TESTING DATA		
PROPERTY	STANDARD	RESULT
Strength		
Dry Tensile Strength	ASTM D882 Standard Test Method for Tensile Properties of Thin Plastic Sheeting	MD - 6 N/mm (34 lb/in) XMD - 4 N/mm (23 lb/in)
Dry Breaking Force (Grab method) MD ≥40 XMD ≥35	ASTM D5034 Standard Test Method for Breaking Strength and Elongation of Textile Fabrics (Grab Test)	MD – 423 N (95 lbf) XMD – 344 N (77 lbf)
Cold Mandrel Bend Test	AC38 Section 3.3.4	MD – no cracks PASS XCD – no cracks PASS
Water Vapor Transmittance		
Water Vapor Transmission Desiccant Method, Procedure A, 24.4°C (76.0°F) 50 %RH	ASTM E96 Standard Test Methods for Water Vapor Transmission of Materials	82 Perm (grain/h•ft ² •inchHg) 4692 ng/Pa•s•m ²
Water Vapor Transmission Desiccant Method, Procedure B, 24.4°C (76.0°F) 50 %RH	ASTM E96 Standard Test Methods for Water Vapor Transmission of Materials	123 Perm (grains/hr•ft ² •inchHg) 7037 ng/Pa•s•m ²
Water Vapor Transmission Dynamic Relative Humidity Measurement (23°C 50 %RH)	ASTM E398 Standard Test Method for Water Vapor Transmission Rate of Sheet Materials Using Dynamic Relative Humidity Measurement	161 Perm (grain/h•ft ² •inchHg) 9211 ng/Pa•s•m ²
Water Resistance Testing		
Water Resistance (Control after Weathering)	AATCC 127 Hydrostatic pressure test (550 mm water column for 5 hours), American Association of Textile Chemists and Colorists	Control - No leakage Weathered - No Leakage
Fire Testing		
Flame Spread Smoke Developed	ASTM E84 Standard Test Method for Surface Burning Characteristics of Building Materials	Flame Spread 5 Smoke Developed 70