

DESCRIPTION & USE

LEXCAN HI-PRO PVC MOLDED SEALANT POCKET is a pre-molded, one-piece pocket flashing fabricated from impact-resistant rigid PVC. To flash objects, the pocket flashing is slit on one side for positioning around them. A welding tab seals the pocket flashing after installation. Use with LEXCOR ROOFPART Pourable Sealer.

HI-PRO PVC MOLDED SEALANT POCKET is used to seal pipe clusters or irregularly shaped protrusions through HI-PRO PVC Membrane roofs that are difficult to flash.

FEATURES & BENEFITS

Prefabricated Membrane Accessory - Provides labour savings, as well as a more professional and consistent appearance than field fabricating a sealant pocket from coated metal or other material.

TECHNICAL DATA

| Typical Properties & Characteristics | |
|--------------------------------------|------------------|
| Colour: | Grey |
| Nominal Thickness: | 3.18 mm (0.125") |

PACKAGING

| | |
|-----------------|-----------------------|
| Size: | 15.2 cm (6") diameter |
| Units per Box: | 12 |
| Weight per Box: | 4.5 kg (10 lbs) |

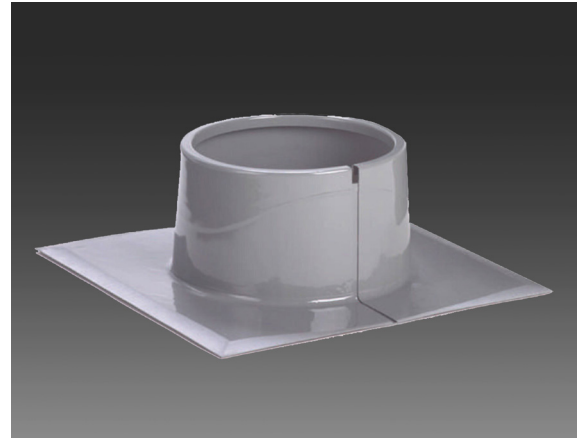
STORAGE

Store indoors, out of direct sunlight, and keep clean and dry prior to installation.

INSTALLATION

Note: Prior to installation, ensure the welding surface is clean and dry. If required, use LEXCAN SINGLE PLY MEMBRANE CLEANER.

1. Make all the corners of the HI-PRO PVC MOLDED SEALANT POCKET round. Use LEXCAN SINGLE PLY MEMBRANE CLEANER to clean the inside of the HI-PRO PVC MOLDED SEALANT POCKET. Place the HI-PRO PVC MOLDED SEALANT POCKET around the penetration, joining the cut part of the pocket.
2. Fasten the HI-PRO PVC MOLDED SEALANT POCKET to the roof deck with four suitable plates and fasteners.
3. Apply a 2-inch-wide aluminum tape, centered over the whole splice and fold it down inside the pocket.
4. Heat-weld a 152 mm (6") wide strip of HI-PRO PVC UN-REINFORCED MEMBRANE at least 38 mm (1.5") wide weld, over the middle of the HI-PRO PVC MOLDED SEALANT POCKET splice, along the entire splice, and fold it down 25 mm (1") into the pan and weld it inside to the inner wall of the pan.



5. Make a 457 mm x 457 mm (18" x 18") square patch of PVC membrane and round all the corners. Cut a hole in the middle of the patch that is 13 mm (0.5") larger than the bottom of the HI-PRO PVC MOLDED SEALANT POCKET. Heat-weld the patch to the HI-PRO PVC MOLDED SEALANT POCKET around the whole opening, and to the field membrane on the outer edges with a weld of at least 38 mm (1.5"). Put a bead of LEXCAN LAP SEALANT around the whole edge of the hole in the PVC membrane patch. If the opening is blocked from above and you can't install a one-piece patch, make a 457 mm x 610 mm (18" x 24") PVC patch, cut it in two and overlap the edges by 76 mm (3") and weld them as described above, and the overlapped edges by at least 38 mm (1.5").
6. With a seam probe, inspect all the welds for any gaps and fix them as needed.
7. Wrap the top of the HI-PRO PVC MOLDED SEALANT POCKET with aluminum tape, leaving 1 inch above the pocket. Fill pocket with LEXCOR ROOFPART pourable sealer making a mound to prevent water from pooling. Use enough sealer to make sure it touches the top edge of the pan.

CAUTIONS & LIMITATIONS

- Do not use HI-PRO PVC MOLDED SEALANT POCKET on any pipe penetrations that exceed 71°C (160°F).
- The walls of the sealant pocket must be at least 25 mm (1") away from any penetration. If there are multiple penetrations within a pocket, each penetration must have a minimum of 25 mm (1") clearance.
- If HI-PRO PVC MOLDED SEALANT POCKET has been exposed to the weather for 7 days or longer, it must be cleaned with LEXCAN SINGLE PLY MEMBRANE CLEANER before hot air welding.
- Do not install in direct contact with asphalt or coal tar pitch.